



SWAVESEY
Camera Club

Affiliated to the Photographic Alliance of Great Britain through the East Anglian Federation

CLUB HANDBOOK

July 2025

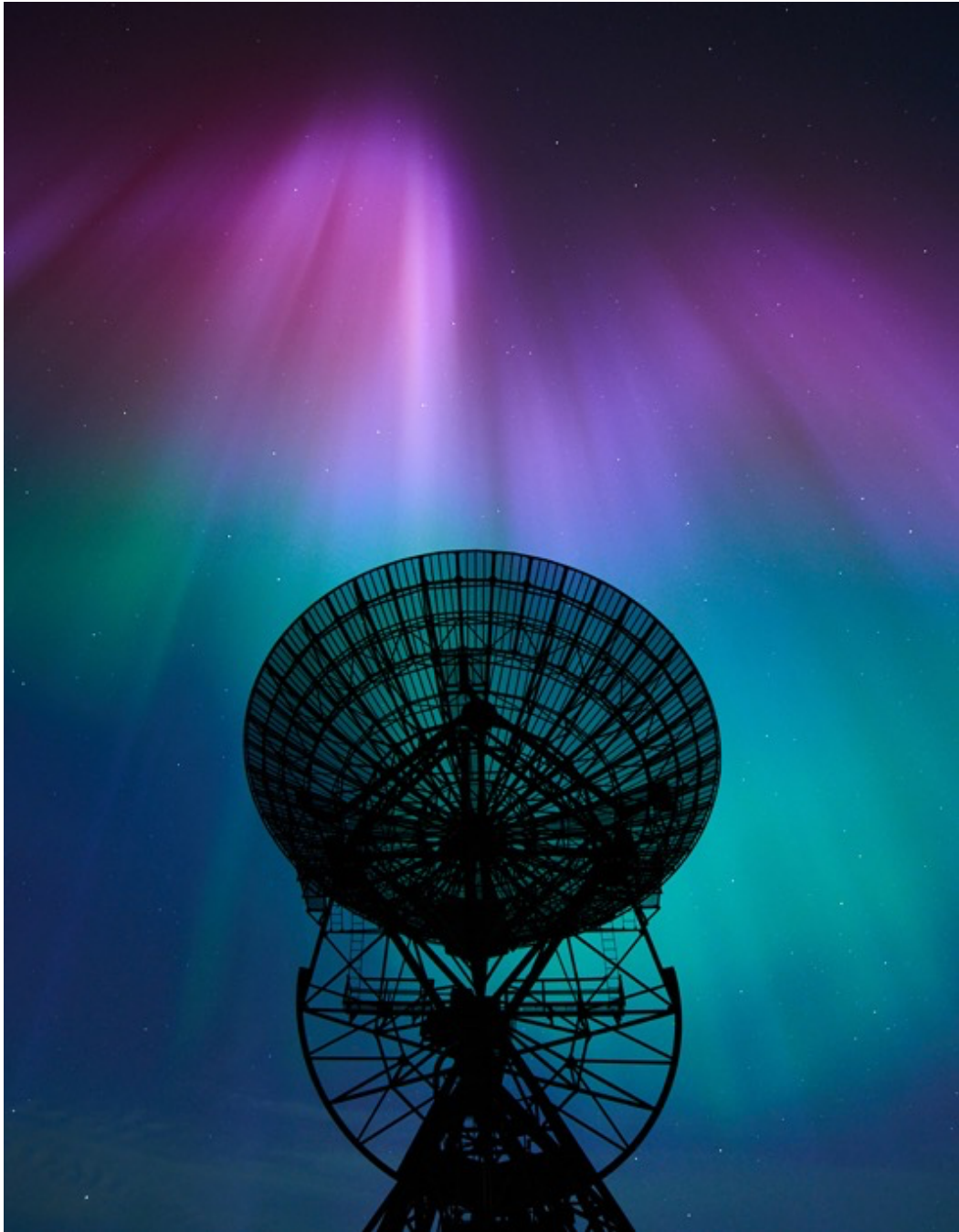


Image of the Year 2024–2025: 'Aurora over the One Mile Telescope Array' by Simon Jelley



Contents

1.	Generally.....	3
2.	CLUB COMMITTEE	3
3.	ANNUAL AND EXTRA-ORDINARY GENERAL MEETINGS	4
4.	CLUB SUBSCRIPTIONS AND GUEST FEES	4
5.	CLUB MEETINGS	5
6.	FINANCIAL MATTERS	5
7.	INTERNAL COMPETITIONS	6
8.	COMPETITION RULES	6
9.	OTHER COMPETITIONS	12
10.	CLUB COMMITTEE	14
11.	CLUB INSURANCE.....	16



CLUB CONSTITUTION

For the fair and efficient management of the club.

1. GENERALLY

- 1.1. This society shall be called 'Swavesey Camera Club'. Its aims are the promotion of knowledge relating to all branches of photography and the fellowship and recreation of its members.
- 1.2. The club is open to all. The majority of members are over 18; those under the age of 16 must be accompanied by a parent or their nominated representative who shall be responsible for their behaviour, welfare and safety.

2. CLUB COMMITTEE

- 2.1. The affairs of the club shall be controlled by a committee comprising: President, Vice-President (to be elected by the standing committee from within their number as elected at the Annual General Meeting), Treasurer, Secretary, Programme Secretary, Competition Secretary and enough ordinary members to make a committee sufficient for the needs of the Club.
- 2.2. The officers and committee members shall be elected, by ballot, at the AGM.
- 2.3. Club members may be co-opted by the committee, when required, to assist the committee with the affairs of the club.
- 2.4. The committee shall meet at their discretion, but such meetings shall be at intervals of not more than 2 months. Four members shall form a quorum.
- 2.5. The committee shall have the power to fill any vacancy on the committee which may arise during the year.
- 2.6. Subject to rule 2.7, no committee member, except the retiring President, shall remain on the committee for longer than 4 consecutive years, after which such members shall retire for at least 12 months. The exception is to provide for continuity and requires the retiring President to be available for re-election to a fifth years further committee service, but not as President.
- 2.7. If by the start of the AGM sufficient nominations have not been received whereby a full committee may be re-elected, those members present may, by a two-thirds majority vote, waive Rule 2.6 in order to permit any retiring member who has served on the committee for 4 consecutive years or more to be eligible for re-election to any committee post, but only for 1 year at a time.
- 2.8. It shall be the duty of the committee members to make themselves known to all new members and to introduce them to other members.
- 2.9. A new committee elected at the AGM shall take over the running of the club at the end of the next committee meeting which should be attended by both the outgoing and incoming committee.



3. ANNUAL AND EXTRA-ORDINARY GENERAL MEETINGS

- 3.1. The last formal meeting of each season shall be the Annual General Meeting (AGM) of the club; all members shall receive 6 weeks written notice of the date, venue, time and business of the AGM.
- 3.2. An Extra-Ordinary General Meeting (EGM) of the club shall be convened by the committee, or the Secretary, at the written request of eight or more members. The request for such a meeting must state the reason(s) for calling such a meeting; all members shall receive 14 days written notice of date, venue, time and business of an EGM.
- 3.3. Alterations to the Constitution of the club shall only be made at the AGM, or at an EGM specifically convened for the purpose and must be passed by a majority of two thirds of those members in attendance.
- 3.4. Any proposed changes to the Constitution to be considered at the AGM should be presented in writing to either the Secretary or the President no less than 5 weeks before the date of the AGM. The membership shall be notified in writing of any such proposed changes no less than 4 weeks before the date of the AGM. Amendments to any such proposals must be received by the Secretary, in writing, at least 2 weeks prior to the date of the AGM.

4. CLUB SUBSCRIPTIONS AND GUEST FEES

- 4.1. Annual subscriptions shall become due at the first meeting of the autumn term. Subscription rates and categories shall be set at each AGM by a majority vote of those attending. There shall be a sliding scale of subscription rates for new members only who join later in the season. Where a person who has been a paying guest of the club (see 4.5 below) later joins as a new member, all charges he or she has paid in that year as a guest will be deducted from the membership fee then due.
- 4.2. Discretionary reduced membership fees are available. Our aim is to make photography available to everyone, regardless of their financial circumstances. If you are unable to pay the membership fee please do contact us. All requests for concessions, or other reductions, will be considered in confidence on a case-by-case basis by the Treasurer and President.
- 4.3. Any existing member whose subscription remains unpaid by the second meeting in November may be removed from the club membership at the discretion of the committee. Any member wishing to resign from the club should do so in writing to the Secretary.
- 4.4. Members should treat all other members with respect and politeness at all times, either face-to-face or in email correspondence. Anyone breaching these requirements will be subject to Item 4.5 and may be asked to permanently leave the club. Anyone with a grievance against another member should, in all cases, approach the President or another Committee member and make them aware of the situation. The Committee will investigate and take action if necessary, individual members should not take matters into their own hands and initiate conflict.



- 4.5. The committee shall have the power to rescind the membership of any member. The committee reserves the right to refuse the facilities of the club to any member who, in the opinion of the committee, is making detrimental use of such facilities e.g. for commercial use, personal gain, negligent use, improper storage, lack of consideration towards other members, not paying any hire fee, etc.
- 4.6. The club reserves the right to levy a charge to occasional guests at a rate set annually by the committee. Guests are not allowed to enter club competitions or borrow or hire club equipment.

5. CLUB MEETINGS

- 5.1. Club meetings shall normally take place on Thursdays commencing at 7:00 pm. Additional club meetings on any such other days shall be decided by the committee e.g., Inter-club competitions etc. Due notice of such other meetings shall be given with as much notice as the committee has available.
- 5.2. If an event is restricted to numbers then precedence shall be given to members.
- 5.3. The Committee may reserve some meetings for members only.
- 5.4. In the event of the unexpected failure of a speaker or judge to arrive at the venue, the committee reserve the right to organise substitute content for the meeting.

6. FINANCIAL MATTERS

- 6.1. Where it is anticipated that the total expenditure on an item will exceed £1000, approval by a majority vote at the AGM or a specially convened EGM shall be obtained prior to proceeding. Expenditure on the following will be exempt from this rule:
 - Club night refreshments
 - Social events financed by pre-payment by club members, e.g. annual barbeque, annual dinner, summer visits
 - Programme
 - Projector bulbs
 - Exhibition
- 6.2. The club accounting year shall be from the first day of June to the last day of May the following year.
- 6.3. The committee shall appoint two non-committee members, or an external auditor, to audit the club accounts prior to presentation at the AGM.
- 6.4. In the event of closure of the club, all assets of the club shall be disposed of at a fair market price and after settlement of all outstanding debts the surplus shall be donated to a charity of the members' choice.
- 6.5. All members shall be liable for the debts incurred by the club.



7. INTERNAL COMPETITIONS

- 7.1. See hereafter under separate 'COMPETITION RULES' section for rules relating to Internal Competitions forming part of the Constitution.

8. COMPETITION RULES

The aim is to provide a level playing field for constitutional club competitions.

8.1. GENERALLY

These rules, which form part of the Club Constitution, apply to the following internal competitions:

- Projected Digital Image (PDI)
- Bamber Trophy (PDI)
- Set Subjects (PDI)
- Colour Print 'Joe Sipos' Trophy
- Monochrome Print Trophy
- Themed Print Panel

See below for general rules applicable to all Constitutional competitions.

See separate section 'COMPETITION RULES — rules specific to individual Constitutional competitions' for further rules specific to each of the competitions listed above.

In the section 'OTHER COMPETITIONS' there are details of the competitions that do not form part of the club constitution. Such competitions will be held at the discretion of and in accordance with rules set by the committee.

The committee may from time to time organise other competitions which will not necessarily be governed by these rules and which will not qualify for the Photographer of the Year competition.

8.2. ELIGIBLE TO ENTER

Fully paid-up members of Swavesey Camera Club.

8.3. ALTERATIONS TO COMPETITION RULES

Alterations to competition rules shall only be made at an AGM or EGM (see Club Constitution rule 3.3). Changes made at an AGM will take effect from the first day of September in that year.

If an urgent situation arises that prevents a meeting or meetings taking place at the venue (e.g., sudden loss of venue, pandemic lockdown) the Competition Secretary has the right to change print competitions to PDI competitions to enable remote viewing so that the competition may proceed on the scheduled date. However, if time allows, such a decision will be presented at an EGM for approval by the membership.



8.4. MONOCHROME DEFINITION

'Monochrome' — a black and white image or one that has been modified by the addition of a single tone to the entire image. (Note: a black and white image which has been modified by the addition of partial toning, or by the addition of one colour to any part of the image is defined as a colour image.)

8.5. SET SUBJECTS

Set Subject Competitions will be PDI only. The subjects chosen shall be selected by the Committee after inviting titles from the general membership. In choosing any theme the Committee will take into account the inclusiveness of the subject to all members and the aim of the club to encourage images that will be suitable for entry into external competitions, and that will offer a challenge in terms of creativity and skill range

8.6. RESTRICTIONS ON ENTRIES

Originating image/component images must be the work of the entrant.

No originating image or image component (presented as a print or PDI, in colour or monochrome) can be used:

- more than once in the same competition
- more than twice in the constitutional Internal Competitions

Where a competition is oversubscribed, and entries are restricted by the Competitions Secretary in accordance with Note 2 on Page 10, an image which is entered but not accepted does not count as 'used' for the purposes of this rule.

Images can be digitally manipulated in any manner but manipulation must be by the entrant.

Images must have a significant photographic content, i.e. from a traditional photographic process, digital camera or scanner. Images created solely in a computer are not acceptable.

Images must be entirely the work of the Photographer. In composite images, all component images must meet this requirement. For the avoidance of doubt, use of images from any other source including, but not limited to, royalty free image banks and clipart are not permitted.

The Competition Secretary and committee have the right to refuse any entry that they deem to be offensive; should this occur the reason for the decision will be communicated to the creator before the competition date.

8.7. SUBMISSION OF ENTRIES

Submissions to competitions are to be made by uploading images to the PhotoEntry website (<https://compent.photoentry.uk/compent/>), unless otherwise advised by the Competition Secretary.

To be eligible to enter competitions send an email to the Internal Competition Secretary with:

1. The full name you wish to use
2. The email address you wish to use for your login



Deadline is 1 week before the competition. For print competitions, a PDI of the images being entered should be uploaded to PhotoEntry with a deadline of 1 week before the competition, with the physical print entries being submitted on the night of the competition.

Entries can be submitted well in advance of the competition deadline; it is anticipated that the competitions for a season will open for submissions on PhotoEntry early in the season. Images that have been submitted can be removed/replaced at any point up to the deadline.

Entries are then automatically loaded into Film Free Projection Extended (FFPx) and sorted for display.

8.8. ACCEPTANCE OF ENTRIES

Late entries will only be accepted at the discretion of the Competition Secretary.

The Competition Secretary reserves the right to reject entries which do not comply with the submission and image format criteria set in the Club Handbook.

8.9. RETENTION OF ENTRIES

Entries for all competitions will be made available for return to the authors no later than a week after the competition.

8.10. PROCESSING

Negatives may be home or trade processed.

8.11. PROJECTED DIGITAL IMAGE COMPETITIONS

All PDIs for upload should be in JPEG format.

- File Type: JPEG (no TIFF's, PSDs, RAW, etc).
- Colour Space: RGB (or Greyscale for monochrome).
- Colour Profile: sRGB.
- Image Dimensions: maximum 1600 pixels horizontally and 1200 pixels vertically.
- File Size: 10 MB maximum.
- File title can be anything (e.g. even _U6A8167.jpg; as straight out of the camera, if you wish). The image title you input is the one that will display on the night of the competition, so please do not include your name in the title.

Please note:

- You do not have to resize images yourself to 1600 px (max.) by 1200 px (max.), however if you don't then PhotoEntry will do it for you, and in some cases the quality may not be what you would wish for.
- You do not have to set the colour space to sRGB IEC61966-2.1 yourself, but if you don't, FFPx may display 'odd' colours. PhotoEntry will not convert your entry to sRGB IEC61966-2.1, but you will get a warning that the colour space is incorrect.



- There is no need to enter any metadata, the image title is all that is required.
- Digital images must not be watermarked or display the author's name.

For detailed instructions on using PhotoEntry see the club website.

8.12. PRINT COMPETITIONS

Prints may be home or trade printed. All prints to be mounted. Print image area (i.e. excluding borders and mount) to be not less than 48 square inches. Overall size (including mount) to be 50 x 40 cm. The following to be shown on the back of each entry: entrants name and title. Prints or mounts must not display the author's name on the front.

In addition to the print itself, an associated PDI of the print conforming to the entry conditions for a PDI Competition should be provided for each print entered. This will not form part of the Print Competition but is a way of recording entries and providing the External Competition Secretary with an easier way of selecting prints for external competitions.

8.13. ENTERING MULTIPLE IMAGES

If you are entering more than one image in a competition, the image at the top is your first choice (i.e. image number one). The next one down is image number two, and so on.

In the event of an over-large number of submissions for a competition, images will be culled from the bottom up (i.e. if you have entered four images and we need to cull entries to three per member, the bottom image will not be used).

You can add, remove/replace and re-order images at any time up until the deadline.

You can edit the image titles at any time up to the deadline.

For panel competitions and the Bamber Trophy, the composite image should be the final (bottom) entry.

8.14. JUDGING

Each image, or panel of images, in each class will be given a mark out of 20.

Where two or more images, or panels of images, are considered to be of a particularly high standard in their class, more than one may be awarded 20 points, at the judge's discretion. In this case, the judge will be asked to select one as the overall winner.

8.15. AWARDS/RESULTS

Trophies will be awarded to members gaining first place in each competition, except in Set Subjects.

Presentation of awards to be at a time decided by the committee.

Results of all competitions shall be minuted by the committee and included in the competition secretary's report at the next AGM.



8.16. GRIEVANCES

Although every effort will be made to ensure that competition entries are shown as the entrant intended, it must be accepted that occasionally omissions or other errors will occur. Any complaints or grievances should be raised in the first instance to the competition secretary who will consider the case with the committee and decide on the best course of action. The committees' decision on any scoring correction is final.



Competition rules

	Monochrome Trophy	Themed Print Panel	Projected Digital Image	Bamber Trophy (PDIs)	Colour Print (Joe Sipos Trophy)	Set Subjects
No. of entries per person (see below)	4 max	2 max	4 max	2 max	4 max	4 max
Each entry to comprise	1 individually mounted monochrome print	5 individually mounted colour and/or monochrome prints on a common theme of the entrants choice, numbered in display sequence from left to right	1 colour or monochrome PDI	5 colour and/or monochrome digital projected images, numbered in projection sequence. A sixth PDI is a montage/ portfolio reminder of the previous five PDIs and does not itself form part of the entry to be judged. The portfolio should be provided displaying the other five PDIs on a black background	1 individually mounted colour print	1 individual colour or monochrome image presented as a PDI
Restrictions (see below)	No more than 2 entries may have been entered in any previous internal competition	No more than 2 prints in each entry may have been entered in any previous internal competition	No more than 2 entries may have been entered in any previous internal competition	No more than 2 images in each entry may have been entered in any previous internal competition	No more than 2 entries may have been entered in any previous internal competition	No more than 2 entries may have been entered in any previous internal
Judging criteria		Each entry to be judged as a set of 5 as a whole on the basis of their technical and aesthetic proficiency and the entrant's interpretation of the stated theme. Print presentation, in terms of both mounting and print arrangement, shall be taken into consideration.		Each entry to be judged as a set of 5 as a whole to demonstrate as wide a range of skill and subject matter as possible		Entries to be judged on their technical and aesthetic proficiency and the entrant's interpretation of the stated subject.

NOTE 1: See also the "Competition Rules — providing a level playing field for Constitutional club competitions" Section for general rules applicable to all of the above club competitions. **NOTE 2:** No. of entries per person – in the event that an excessively large number of images are presented for a particular competition, the Competition Secretary may restrict the number of entries from each competitor. **NOTE 3:** Restrictions — excludes entry into competitions included under "Other Competitions" Section.



9. OTHER COMPETITIONS

The following do not form part of the Club Constitution and will be held at the discretion of and in accordance with the following rules set by the committee.

9.1. PHOTOGRAPHER OF THE YEAR

AIMS

To find the best performing member in internal competitions.

ELIGIBLE TO ENTER

All images, or panels of images, entered in the following competitions:

- PDI
- Bamber Trophy
- Set Subject Competitions
- Colour Print 'Joe Sipos' Trophy
- Monochrome Print Trophy
- Themed Print Panel

SCORING

Cumulative totals will be kept of the top two scores for each entrant in each internal competition by counting the points awarded by the judge in each of the competitions.

The member with the highest cumulative points total at the end of the year will be the "Photographer of the Year" for that category. Where members are tied on cumulative points total, placings will be determined on count-back whereby the higher place in the Photographer of the Year shall be awarded to:

- a) the holder of the greatest number of first places
- b) if the number of first places is the same, the holder of the greatest number of maximum scores (20 point scores)
- c) if the number of 20 point scores is the same, the holder of the greatest number of 19 point scores and so on until a winner emerges
- d) if no winner emerges at this stage, then the trophy will be shared.



9.2. SET SUBJECTS COMPETITION

AIMS

To find the best performing member in Set Subject Competitions.

SCORING

Cumulative totals will be kept of the top two scores for each entrant in each of the three Set Subject Competitions by counting the points awarded by the judge in each of the competitions

The member with the highest cumulative points total at the end of the year will be awarded the SCCSSC for that category. Where members are tied on cumulative points total, placings will be determined on count-back whereby the higher place shall be awarded to:

- a) the holder of the greatest number of first places
- b) if the number of first places is the same, the holder of the greatest number of 20 point scores
- c) if the number of 20 point scores is the same, the holder of the greatest number of 19 point scores and so on until a winner emerges;
- d) if no winner emerges from these steps, then the trophy will be shared.

9.3. IMAGE OF THE YEAR

AIMS

To find the outstanding image entered in the internal competitions.

ELIGIBLE TO ENTER

Highest scored entries in the following competitions:

- Monochrome Trophy
- Themed Print Panel
- PDI
- Bamber Trophy
- Colour Print 'Joe Sipos Trophy'
- Set Subject Competitions

In the case of the Bamber Trophy and Themed Print Panel, members eligible to enter will be asked to select one image only from their winning set(s) to go forward for judging in the Image of the Year competition.

RESTRICTIONS ON ENTRIES

Entries going forward for judging shall be those entered in the individual competitions; duplicates and/or reworked versions will not be permitted. Prints must be in their original mounts.



In the event of the original entry being damaged or otherwise unavailable a duplicate entry, identical to the original in all respects, may be accepted at the discretion of the Competition Secretary.

JUDGING

Although an external judge will typically be used to comment on all eligible images, the membership will vote to select a PDI of the Year and a Print of the Year from which the overall Image of the Year will be chosen by a final vote.

10. CLUB COMMITTEE

Members of the committee serve the club in the ways shown below. It is important that you know who does what. Names of individual committee members are listed on the Club website (www.swaveseycameraclub.co.uk/committee_members.html).

If you have any queries, please approach them with any questions, comments and/or suggestions you may have about the club.

If you are unsure who to approach, feel free to ask any committee member who will advise you who to talk to or pass on your query to the appropriate person.

10.1. PRESIDENT

The President keeps a general eye on all club matters:

- hosts club meetings.
- sets up and chairs committee meetings.
- sets up and chairs the Annual General Meeting and Extraordinary General Meetings.
- keeps an eye on the way the club is developing.
- ensures that the club faces up to all its opportunities and challenges.

10.2. VICE PRESIDENT

The Vice President assists the President in carrying out the above duties and deputises in the President's absence.

10.3. SECRETARY

The Club Secretary acts as scribe in the general affairs of the club:

- minutes the proceedings at all main committee meetings
- minutes the proceedings at the Annual General Meeting and Extraordinary General meetings
- acts as postal address for club correspondence
- monitors and updates the club notice board.



10.4. TREASURER

The Club Treasurer looks after the club's finances:

- collects members' subscriptions and keeps a list of the current members' names, addresses and telephone numbers.
- pays all lecturers, judges etc. and all expenses such as room hire, insurance, EAF fees and committee expenses.
- keeps an account of income and expenditure up-to-date
- banks all cheques and cash and keep the balance of the current account and building society account at reasonable levels
- gets the accounts audited at the end of the year and presents the accounts at the AGM
- regularly reports on the financial state of the club
- controls the borrowing and/or hiring of club equipment including collection of hire fees.

10.5. PROGRAMME SECRETARY

The Programme Secretary designs and organises the club's programme. Much of this work is done in liaison with other members of the committee — notably the Competition Secretary:

- maintains a database of speakers and judges
- books speakers for events in liaison with the competition secretary- ensuring speakers have adequate notice (up to 2 years)
- confirms speakers' bookings by letter and writes to speakers a few weeks in advance to remind them.
- produces the main club programme (usually September to June) and its 'leaflet' version.

10.6. COMPETITION SECRETARIES

The Competition Secretaries look after arrangements for internal and external competitions:

- Liaise with the programme secretary to assist in arranging the programme and ensuring that the competitions are arranged at appropriate intervals during the programme year.
- Assist with booking the appropriately qualified judges for the relevant competitions.
- Accept, prepare and log the members entries for judging.
- Ensures on the competition evenings that the presentation of the entries to the judge is correct and is responsible for the smooth running of the competition events.
- Collate results of the competitions for presentation to the members.



- Arrange for entries to external competitions and exhibitions and for the distribution of members' material to the relevant organisations for selection.
- Encourage and promote a competitive spirit amongst the membership in order that members will feel confident in offering their work for entry in internal and external competitions and exhibitions.

11. CLUB INSURANCE

The Club's Insurance Position: the club maintains Public Liability and All Risks Insurance.

- A copy of the current Public Liability insurance certificate is attached to the club notice board.
- A copy of the All Risks insurance policy is available for inspection from the Treasurer, if required.